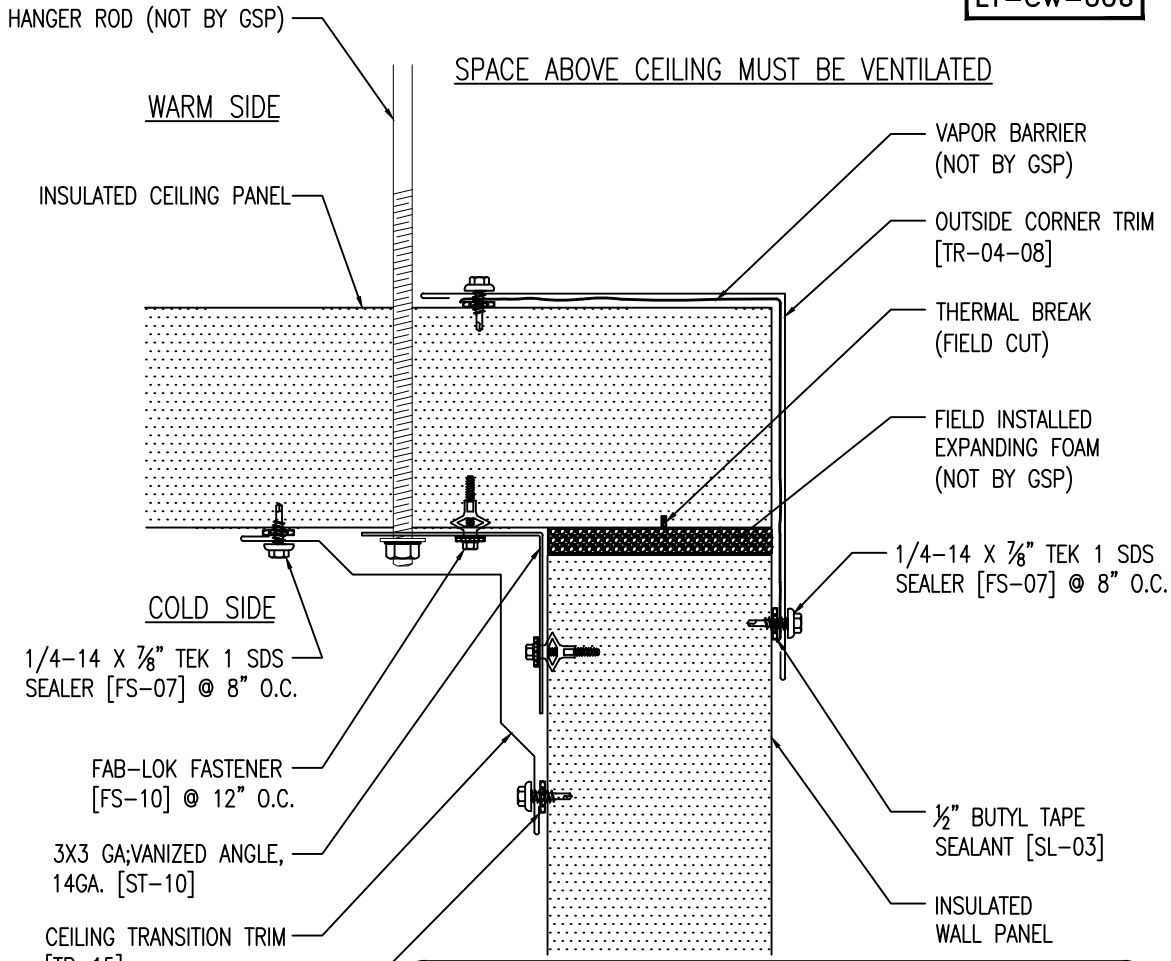


LT-CW-006



1/4-14 X 7/8" TEK 1 SDS SEALER [FS-07] @ 8" O.C.

FAB-LOK FASTENER [FS-10] @ 12" O.C.

3X3 GALVANIZED ANGLE, 14GA. [ST-10]

CEILING TRANSITION TRIM [TR-15]

1/2" BUTYL TAPE SEALANT [SL-03]

- NOTE:
1. DEPENDING ON PANEL SPAN AND SUPPORT SYSTEM, 14 GA. ANGLE MAY BE REQUIRED TO BE SUPPORTED BY ROOF STEEL, METHOD OF SUPPORT NOT BY GREEN SPAN PROFILES
 2. ALL CEILING PANELS AND SUPPORT COMPONENTS MUST BE INSTALLED COMPLETE PRIOR TO ALLOWING ANY LOAD ON CEILING.
 3. THIS DETAIL IS ONLY VALID WITH 42" MAX. WIDTH INSULATED METAL CEILING PANELS.
 4. INTERIOR VAPOR SEAL IS MOST LIKELY REQUIRED. THE PROJECT DESIGNER IS RESPONSIBLE FOR SPECIFYING REQUIREMENTS.
 5. BRACING OF RODS MAY BE REQUIRED, DESIGN NOT BY GSP.
 6. FIELD CUT STARTING PANEL AND ENDING PANEL AS REQUIRED AT CEILING TRANSITION. USE OF RECIPROCATING SAWS IS PROHIBITED.
 7. CONSULT WWW.GREENSPANPROFILES.COM FOR ALLOWABLE LOADS AND SPACING OF ATTACHMENTS



GREEN SPAN PROFILES®
INSULATED PANEL TECHNOLOGIES

CEILING TO WALL

| | | | |
|----------------------------------|---------------|---------------------------|--|
| APPLICATION: FREEZER OR COOLER | | NOTES: | |
| SCALE: NTS | REVISION: 2 | DATE: 4-8-16 | |
| DRAWN: DG | DATE: 8-30-12 | | |
| CHECK: | DATE: | | |
| 21200 FM362, WALLER, TEXAS 77484 | 281-807-7400 | WWW.GREENSPANPROFILES.COM | |