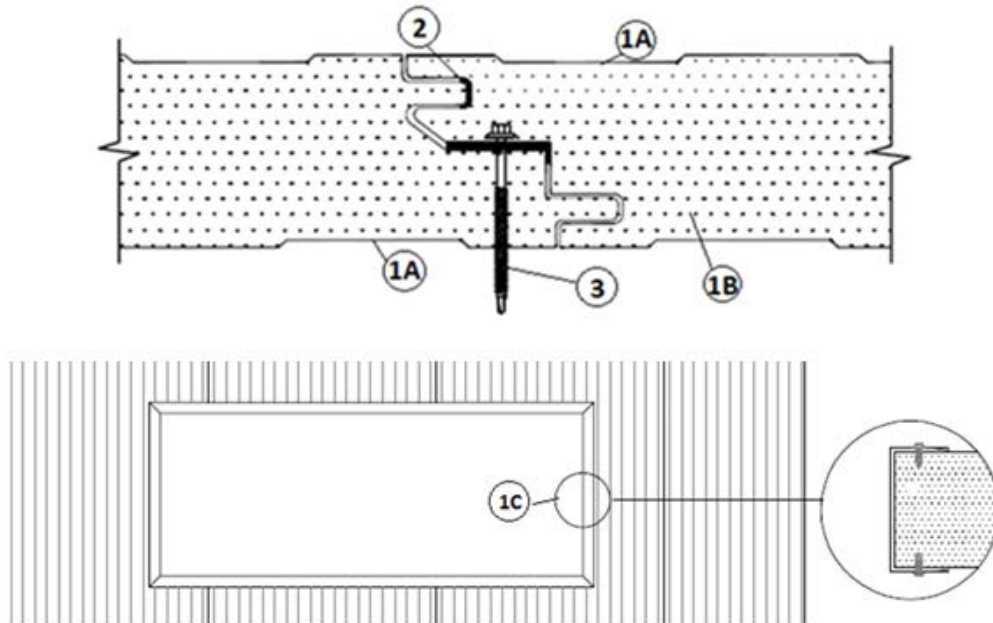


Green Span Profiles LP
Design No. GSP/CWP 30-01
Insulated Wall Panel
Non-Load Bearing Wall System
NFPA 285
Rating: Meets Conditions of Acceptance



1. CERTIFIED MANUFACTURER: Green Span Profiles LP

CERTIFIED PRODUCT: Insulated Metal Wall Panel

CERTIFIED MODELS: Mesaline, Shadowline, Waveline, Cleanline, Impression, Stucco, and Infinity.

INSULATED WALL PANELS: Construct wall of panels measuring nominal 42 in. of coverage width and min. thickness of the insulated panels is 2 in. Max. approved thickness is 6 in. Install panels with the longitudinal (long dimension) edges placed vertically. Construct wall panels of the following materials:

- A. **PANEL FACING** – Construct interior and exterior faces of min. 26 GA Galvalume[®], G90 galvanized or stainless steel. Panel faces are roll formed with a smooth (no profile) or embossed profile.
- B. **POLYISOCYANURATE FOAM CORE** – Fill hollow core between panel faces (Item 1A) with nominal 2.5 pcf density polyisocyanurate foam forming the male and female mating edges of the panels.
- C. **Trim open areas** with min. 26 GA. channel (width determined by panel thickness) and secure with 3/4 in. long, hex washer head, self-drilling screws spaced 9-1/2 in. oc.



2. **SIDE JOINT SEALANT:** Install a nominal 1/4 in. bead of Acryl-R SM5430 non-skinning roof sealant to the female edge of the exterior side prior to joining the insulated wall panels (Item 1).
3. **FASTENERS:** (Concealed-Fasteners) Install two 6 in. long, HWH BZLR DP5 TS N/W screws through the holes of 3-1/2 in. long clips. The screws shall be of sufficient length so as to properly engage the wall support member. Install clips at each wall support member.